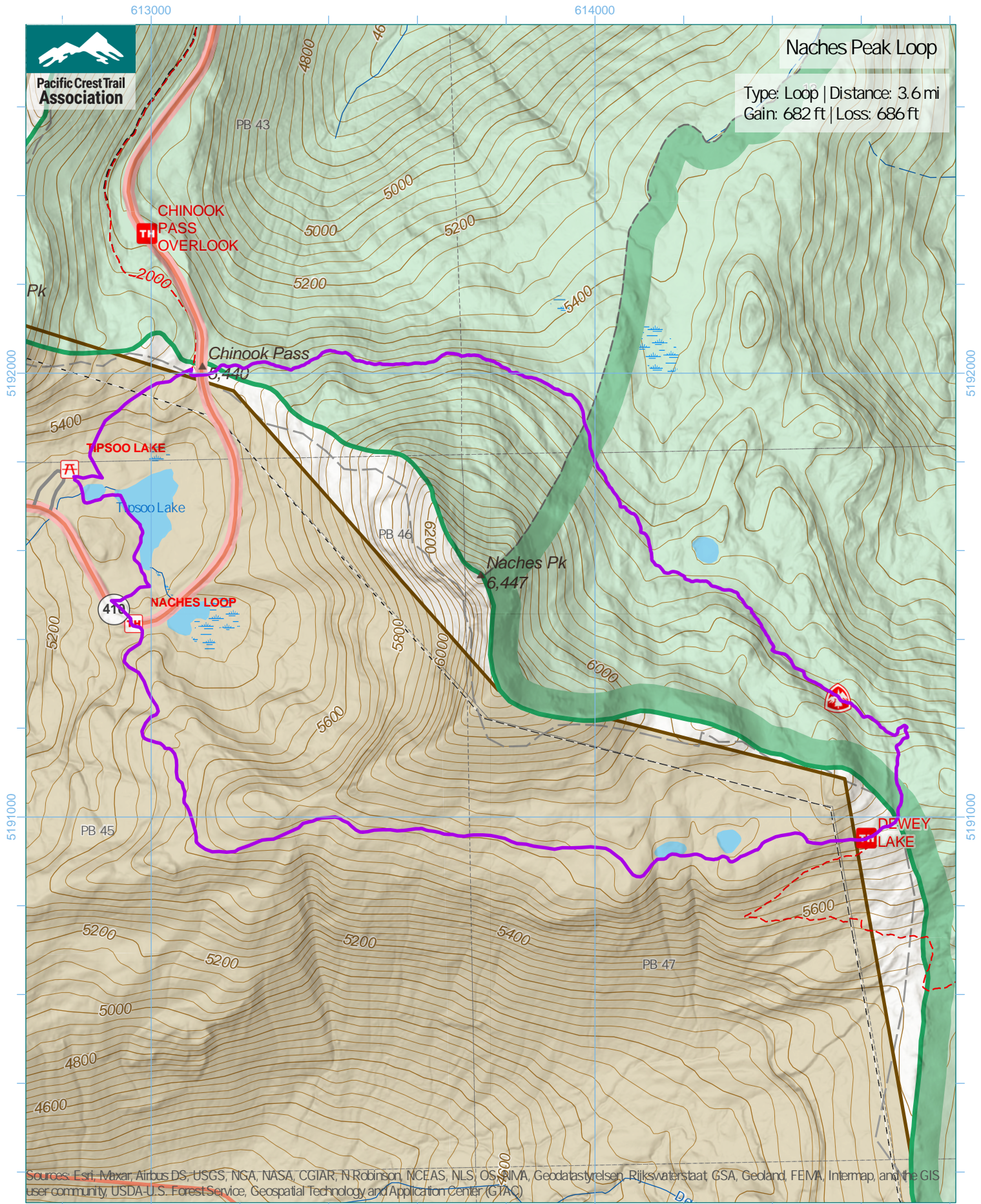


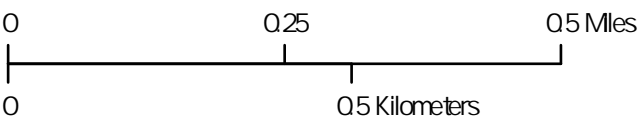


Naches Peak Loop

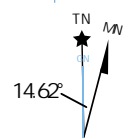
Type: Loop | Distance: 3.6 mi
Gain: 682 ft | Loss: 686 ft



Sources: Esri, Maxar, Airbus DS, USGS, NGA, NASA, CGIAR, N Robinson, NCEAS, NLS, OS, NOAA, Geodatastyrelsen, Rijkswaterstaat, GSA, Geoland, FEMA, Intermap, and the GIS user community, USDA-U.S. Forest Service, Geospatial Technology and Application Center (GTAC)



1 inch equals 917 feet
1:11,000
WGS 1984 UTM Zone 10N



Trip data by PCTA
Basemap by US Forest Service
Contour interval: 40ft